

One Year Limited Warranty

WHAT THE WARRANTY COVERS:

Central Aquatics (Company) warrants this Coralife® product (see Exclusions below) to the original purchaser against defective material and workmanship that occurs during normal in-home use for one year. Company will, at Company's option, either repair or replace same without charge (but no cash refunds will be made). This warranty is limited to replacement or repair of product only and does not cover loss of aquarium life, personal injury, property loss, or damage arising from the use of the product.

EXCLUSIONS:

1. Damage resulting from accident, misuse, abuse, lack of reasonable care, subjecting the product to any but the specified electrical service, other than normal and ordinary use of the product, subjecting the product to abnormal working conditions or any other failure not resulting from defects in materials or workmanship.
2. Damage resulting from modification, tampering with or attempted repair by anyone other than the Company.
3. Transfer of product to someone other than the original consumer purchaser.

WHAT YOU MUST DO TO ENFORCE WARRANTY:

Contact the Company by telephone:
888-255-4527

Or contact the Company by writing:
Central Aquatics
5401 West Oakwood Park Drive, Franklin, WI 53132
Attn.: Warranty

You must pay any postage, shipping charges, insurance costs and other expenses to return the product along with the original cash register receipt to Central Aquatics. However, if the necessary repairs are covered by the warranty, Company will pay the return shipping charges to any destination within the United States or Canada.

LIMITATION OF IMPLIED WARRANTIES AND EXCLUSION OF CERTAIN DAMAGES:

THE COMPANY DISCLAIMS LIABILITY FOR INCIDENTAL AND CONSEQUENTIAL DAMAGES FOR BREACH OF ANY EXPRESS OR IMPLIED WARRANTY, INCLUDING ANY IMPLIED WARRANTY OF MERCHANTABILITY, WITH RESPECT TO THIS PRODUCT. THIS WRITING CONSTITUTES THE ENTIRE AGREEMENT OF THE PARTIES WITH RESPECT TO THE SUBJECT MATTER HEREOF; NO WAIVER OR AMENDMENT SHALL BE VALID UNLESS IN WRITING SIGNED BY THE COMPANY. Some states do not allow the exclusion or limitation of consequential damages, so the above limitation or exclusion may not apply to you.



Mini Ultraviolet Sterilizer

Fits BioCube® Aquariums
Sizes 14, 16, 29, and 32

Instructions



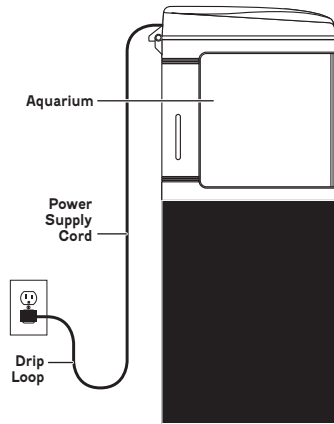
**Please read these instructions
in their entirety before attempting
to use this product.**

Specifications

5 watts, 120V AC input,
12V DC output, 60Hz

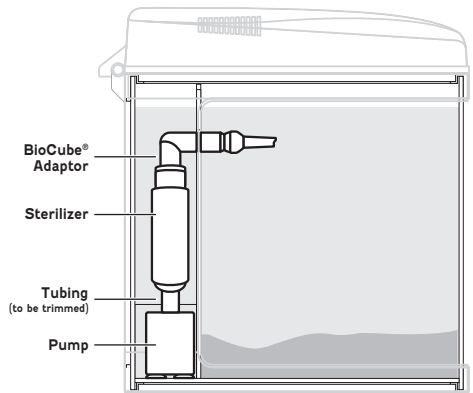
Safety Instructions

1. Ultraviolet-C light is damaging to the skin and eyes. Always unplug sterilizer before servicing. Do not operate the mini ultraviolet sterilizer without protective shielding around bulb.
2. Never plug or unplug mini ultraviolet sterilizer or any electrical device with wet hands.
3. A "drip loop" must be used with this device to prevent water from running into the outlet.
4. Do not run mini ultraviolet sterilizer dry.

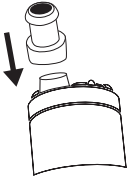


Setup Instructions

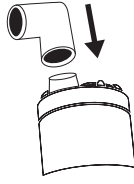
1. Unplug BioCube® return pump. Remove BioCube® pump, tubing, and filter wall connector from BioCube® aquarium.
2. Use included tubing to connect bottom of mini ultraviolet sterilizer to pump. Trim tubing to size for proper fit.
3. Place pump and mini ultraviolet sterilizer back into BioCube® aquarium.
4. Connect top of mini ultraviolet sterilizer to BioCube® filter wall outlet using BioCube® adaptor. BioCube® adaptor takes the place of the filter wall connector.
5. Plug in pump and mini ultraviolet sterilizer.
6. Note date of installation. Bulb unit should be replaced every six months to maintain function.



Removable Adaptors



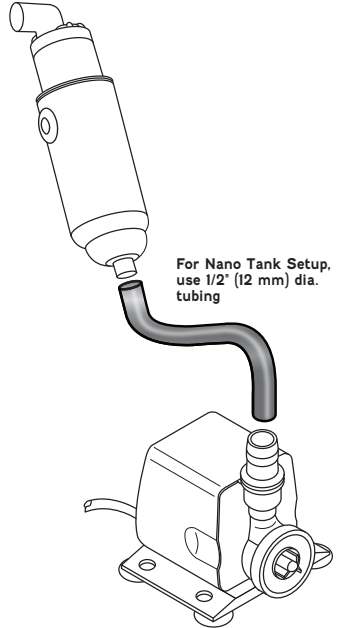
Universal Adaptor



BioCube® Adaptor

Nano Tank Setup Instructions

1. BioCube® Mini Ultraviolet Sterilizer is designed for full or partially submerged internal aquarium use only. Do not use outside of the aquarium.
2. Connect pump to bottom of Mini Ultraviolet Sterilizer with $\frac{1}{2}$ " or 12 mm I.D. tubing. Pump should not exceed 300 gph; ultraviolet works optimally at 100-200 gph.
3. Replace BioCube® adaptor with universal adaptor and flexible tubing if necessary.
4. Connect flexible tubing to outlet and return back to aquarium.



Bulb Unit Replacement Instructions

1. Unplug BioCube® mini ultraviolet sterilizer.
2. Disconnect transformer from bulb unit.
3. Unscrew bulb unit from sterilizer body.
4. Replace bulb unit with new component.
Be sure to use BioCube® ultraviolet lamp V2 to ensure compatibility with sterilizer.
5. Connect transformer to new bulb unit.

